

Chemisier et robe amples à col rond, manche à même et pli creux au dos. Poches plaquées à la poitrine et bande pour la finition de la manche. La version chemisier (A) arrive au-dessus des hanches. La version robe (B) est au genou et inclut des poches dans la couture de côté.

Boxy button-front shirt and shirtdress with band collar, cut-in sleeves finished with a band and rectangle chest pockets. The shirt (A) hits just above high hips. The dress version hits just above the knee and includes in-seam pockets.

MESURES DU CORPS (FILLES) - BODY MEASUREMENTS (GIRLS)

Âge approximatif - Approximate age	2	3	4	5	6	7	8	9	10	11	12	13	
Tailles européennes - European sizes	92	98	104	112	119	127	135	142	146	150	152	155	
TAILLE JALIE - JALIE SIZES	F	G	H	I	J	K	L	M	N	O	P	Q	
	1 TOUR DE POITRINE FULL BUST	21"	22"	23"	24"	25"	26"	27"	28"	29"	30"	31"	32"
		53 cm	56 cm	58 cm	61 cm	64 cm	66 cm	69 cm	71 cm	74 cm	76 cm	79 cm	81 cm
	2 TOUR DE TAILLE NATURAL WAIST	20"	20 1/2"	21"	21 1/2"	22"	22 1/2"	23"	23 3/4"	24 1/2"	25 1/4"	25 3/4"	26 1/2"
		51 cm	52 cm	53 cm	55 cm	56 cm	57 cm	58 cm	60 cm	62 cm	64 cm	66 cm	67 cm
3 TOUR DES HANCHES FULL HIPS	22"	23"	24"	25"	26"	27"	28"	29 1/2"	30 1/2"	32"	33"	34 1/2"	
	56 cm	58 cm	61 cm	64 cm	66 cm	69 cm	71 cm	74 cm	78 cm	81 cm	84 cm	87 cm	
4 TRONC (DEVANT+DOS) TORSO (FRONT+BACK)	35"	37"	39"	41"	43"	45"	47"	48 3/4"	50 1/2"	52"	53 3/4"	55 1/2"	
	89 cm	94 cm	99 cm	104 cm	109 cm	114 cm	119 cm	123 cm	128 cm	132 cm	137 cm	141 cm	

TISSU REQUIS - YARDAGE

<p>Tissus légers et souples: lin, chambray, challis de rayonne, crepe de chine, tencel lyocell</p> <p>Light-weight fabrics with a soft hand and nice drape: linen, linen blends, chambray, rayon challis, crepe de chine, tencel lyocell.</p>	45"	CHEMISIER (A) SHIRT (A)	1 yd 0.75 m	1 yd 0.80 m	1 yd 0.85 m	1 yd 0.90 m	1 1/4 yd 0.95 m	1 1/4 yd 1.10 m	1 1/2 yd 1.20 m	1 1/2 yd 1.25 m	1 1/2 yd 1.30 m	1 1/2 yd 1.35 m	1 3/4 yd 1.40 m	2 yd 1.65 m
	115 cm	ROBE (B) SHIRTDRESS (B)	1 yd 0.90 m	1 1/4 yd 0.95 m	1 1/4 yd 1.00 m	1 1/4 yd 1.10 m	1 1/2 yd 1.25 m	2 yd 1.75 m	2 yd 1.80 m	2 1/4 yd 1.90 m	2 1/4 yd 1.95 m	2 1/4 yd 2.00 m	2 1/4 yd 2.00 m	2 3/4 yd 2.35 m
	58"	CHEMISIER (A) SHIRT (A)	3/4 yd 0.60 m	3/4 yd 0.65 m	1 yd 0.70 m	1 yd 0.75 m	1 yd 0.75 m	1 yd 0.80 m	1 yd 0.80 m	1 1/4 yd 1.10 m	1 1/4 yd 1.10 m	1 1/2 yd 1.15 m	1 1/2 yd 1.20 m	1 1/2 yd 1.20 m
	147 cm	ROBE (B) SHIRTDRESS (B)	1 yd 0.75 m	1 yd 0.80 m	1 yd 0.85 m	1 yd 0.90 m	1 1/4 yd 0.95 m	1 1/4 yd 1.05 m	1 1/4 yd 1.10 m	1 3/4 yd 1.60 m	2 yd 1.65 m	2 yd 1.70 m	2 yd 1.75 m	2 yd 1.80 m

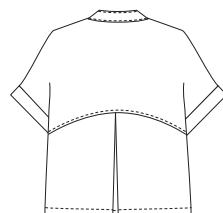
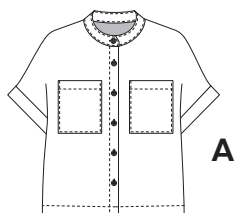
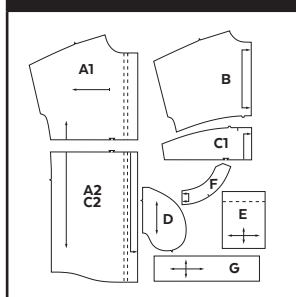
MESURES DU CORPS (FEMMES) - BODY MEASUREMENTS (WOMEN)

Taille US APPROX. US size	2	4	6	8	10	12	14	16	18	20	22	24				
Prêt-à-porter APPROX. RTW size	XS		S			M		L		XL		2XL				
Tailles euro - European sizes	34	36	38	40	42	44	46	48	50	52	54	56				
TAILLE JALIE - JALIE SIZES	R	S	T	U	V	W	X	Y	Z	AA	BB	CC	DD	EE	FF	GG
1 TOUR DE POITRINE FULL BUST	33" 84 cm	34" 86 cm	35" 89 cm	36" 91 cm	37" 94 cm	38" 96 cm	39" 99 cm	40" 102 cm	41 1/2" 106 cm	42 3/4" 109 cm	44" 112 cm	45 1/2" 116 cm	46 3/4" 119 cm	48 1/4" 123 cm	49 1/2" 126 cm	51" 130 cm
2 TOUR DE TAILLE NATURAL WAIST	27" 69 cm	28" 71 cm	29" 74 cm	30" 76 cm	31" 78 cm	32" 81 cm	33" 84 cm	34" 86 cm	35 1/4" 89 cm	36 1/2" 93 cm	37 3/4" 96 cm	39" 99 cm	40 1/4" 102 cm	41 1/2" 105 cm	42 3/4" 109 cm	44" 112 cm
3 TOUR DES HANCHES FULL HIPS	36" 91 cm	37" 94 cm	38" 96 cm	39" 99 cm	40" 102 cm	41" 104 cm	42" 106 cm	43" 109 cm	44 1/2" 113 cm	45 3/4" 116 cm	47" 120 cm	48 1/2" 123 cm	49 3/4" 126 cm	51 1/4" 130 cm	52 3/4" 134 cm	54" 137 cm
4 TRONC (DEVANT+DOS) TORSO (FRONT+BACK)	57 1/4" 145 cm	59" 150 cm	59 1/2" 152 cm	60" 153 cm	60 1/2" 154 cm	61" 155 cm	61 1/2" 156 cm	62 1/2" 159 cm	63 1/2" 161 cm	64" 163 cm	65" 165 cm	65 3/4" 167 cm	66 1/2" 169 cm	67 1/4" 171 cm	68 1/4" 173 cm	69" 175 cm

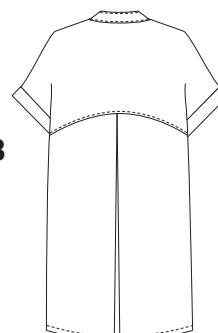
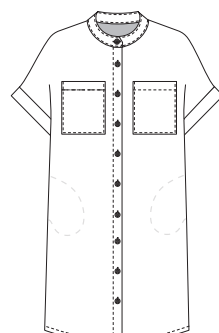
TISSU REQUIS - YARDAGE

45"	CHEMISIER (A) SHIRT (A)	2 yd 1.75 m	2 yd 1.80 m	2 yd 1.80 m	2 yd 1.80 m	2 yd 1.80 m	2 1/4 yd 1.85 m	2 1/4 yd 1.85 m	2 1/4 yd 1.85 m	2 1/4 yd 1.85 m	2 1/4 yd 1.85 m	2 1/4 yd 1.90 m	2 1/4 yd 1.90 m	2 1/4 yd 1.90 m	2 1/4 yd 1.90 m	2 1/4 yd 1.95 m
115 cm	ROBE (B) SHIRTDRESS (B)	2 3/4 yd 2.40 m	2 3/4 yd 2.45 m	2 3/4 yd 2.45 m	2 3/4 yd 2.50 m	2 3/4 yd 2.50 m	2 3/4 yd 2.50 m	2 3/4 yd 2.50 m	2 3/4 yd 2.50 m	3 yd 2.55 m	3 yd 2.55 m	3 yd 2.55 m	3 yd 2.55 m	3 yd 2.70 m	3 yd 2.70 m	3 yd 2.70 m
58"	CHEMISIER (A) SHIRT (A)	1 1/2 yd 1.25 m	1 1/2 yd 1.30 m	1 1/2 yd 1.35 m	1 1/2 yd 1.35 m	1 1/2 yd 1.35 m	1 1/2 yd 1.35 m	1 1/2 yd 1.35 m	1 1/2 yd 1.35 m	1 1/2 yd 1.35 m	1 1/2 yd 1.35 m	2 yd 1.65 m	2 yd 1.65 m	2 yd 1.65 m	2 yd 1.65 m	2 yd 1.65 m
147 cm	ROBE (B) SHIRTDRESS (B)	2 1/4 yd 1.85 m	2 1/4 yd 1.90 m	2 1/4 yd 1.95 m	2 1/4 yd 1.95 m	2 1/4 yd 1.95 m	2 1/4 yd 1.95 m	2 1/4 yd 1.95 m	2 1/4 yd 1.95 m	2 1/4 yd 2.00 m	2 1/4 yd 2.00 m	2 1/4 yd 2.00 m	2 1/2 yd 2.25 m	2 1/2 yd 2.25 m	2 1/2 yd 2.25 m	2 1/2 yd 2.25 m

PIÈCES - PATTERN PIECES



DOS - BACK



DOS - BACK

MERCERIE - NOTIONS

BOUTONS DE 10-12 mm 3/8" - 1/2" BUTTONS			
A	F-J	K-N	O-GG
	5	6	7
B	F-G	H-J	K-P
	7	8	9
ENTOILAGE THERMOCOOLLANT FUSIBLE INTERFACING			
F - O	75 cm (30")	P - GG	90 cm (36")