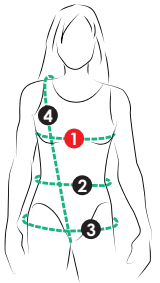


Kimono inspiré du vêtement traditionnel avec ceinture et poches généreuses et manche trois-quart. Ample et au genou, il peut être porté comme vêtement d'intérieur ou comme un veston ample.

Kimono inspired by the traditional garment, with sash, generous patch pockets and three-quarter sleeves. Knee-length and loose-fitting design that can be used as loungewear or over garments, as a jacket or cardigan in a heavier fabric.

MESURES DU CORPS (FILLES) - BODY MEASUREMENTS (GIRLS)

Âge approximatif - Approximate age		2	3	4	5	6	7	8	9	10	11	12	13
Tailles européennes - European sizes		92	98	104	112	119	127	135	142	146	150	152	155
TAILLE JALIE - JALIE SIZES		F	G	H	I	J	K	L	M	N	O	P	Q
	1 TOUR DE POITRINE FULL BUST	21" 53 cm	22" 56 cm	23" 58 cm	24" 61 cm	25" 64 cm	26" 66 cm	27" 69 cm	28" 71 cm	29" 74 cm	30" 76 cm	31" 79 cm	32" 81 cm
	2 TOUR DE TAILLE NATURAL WAIST	20" 51 cm	20 1/2" 52 cm	21" 53 cm	21 1/2" 55 cm	22" 56 cm	22 1/2" 57 cm	23" 58 cm	23 3/4" 60 cm	24 1/2" 62 cm	25 1/4" 64 cm	25 3/4" 66 cm	26 1/2" 67 cm
	3 TOUR DES HANCHES HIPS (FULLEST)	22" 56 cm	23" 58 cm	24" 61 cm	25" 64 cm	26" 66 cm	27" 69 cm	28" 71 cm	29 1/2" 74 cm	30 1/2" 78 cm	32" 81 cm	33" 84 cm	34 1/2" 87 cm
	4 TRONC (DEVANT+DOS) TORSO (FRONT+BACK)	35" 89 cm	37" 94 cm	38 1/2" 98 cm	40" 102 cm	41 1/2" 105 cm	43 1/4" 110 cm	45" 114 cm	47" 119 cm	49" 124 cm	51" 130 cm	53" 135 cm	55" 140 cm

TISSU REQUIS - YARDAGE

	42"	UNI (UN SEUL TISSU) SOLID (ONE FABRIC)	1 1/2 yd	1 1/2 yd	1 3/4 yd	2 1/4 yd	2 1/4 yd	2 1/4 yd	2 1/4 yd	2 1/2 yd	2 1/2 yd	2 3/4 yd	2 3/4 yd	3 yd
	106 cm		1.30 m	1.35 m	1.40 m	1.85 m	1.95 m	2.00 m	2.05 m	2.15 m	2.20 m	2.40 m	2.50 m	2.55 m
	56"	UNI (UN SEUL TISSU) SOLID (ONE FABRIC)	1 1/2 yd	1 1/2 yd	1 3/4 yd	1 3/4 yd	1 3/4 yd	1 3/4 yd	1 3/4 yd	2 yd	2 yd	2 yd	2 yd	2 1/4 yd
142 cm		1.30 m	1.35 m	1.40 m	1.45 m	1.50 m	1.55 m	1.60 m	1.65 m	1.75 m	1.80 m	1.85 m	1.90 m	

TISSUS CONSEILLÉS RECOMMANDÉ FABRICS *Étoffe tissée avec une belle tombée: crêpe, challis de rayonne, soie, chambray, satin. Woven fabric with soft hand like crepe, rayon challis, silk, satin, chambray.*

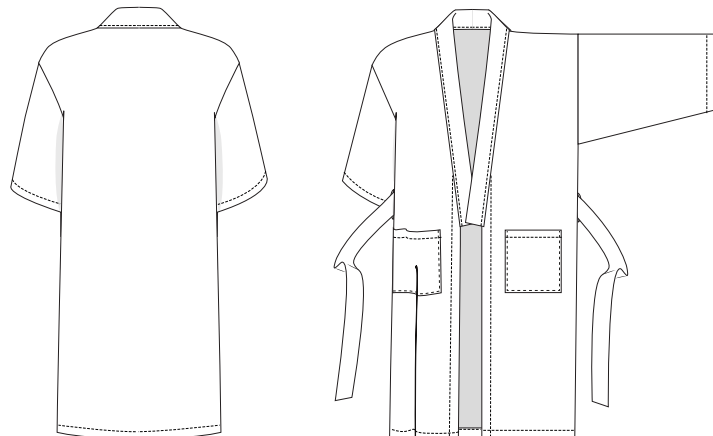
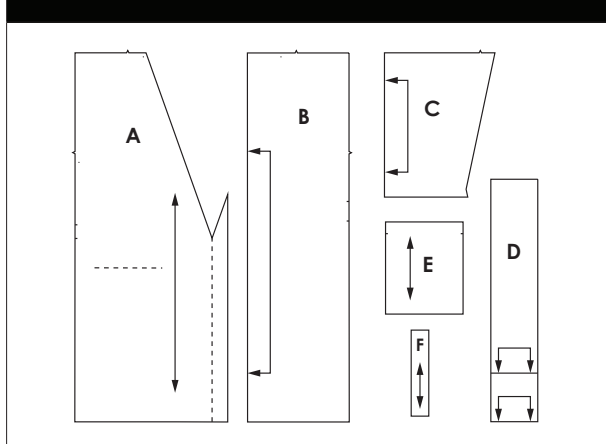
MESURES DU CORPS (FEMMES) - BODY MEASUREMENTS (WOMEN)

Prêt-à-porter APPROX. RTW size	4	6	7	8	9	10	11	12	13	14	15	16	18	20	22
Tailles euro - European sizes	34	36	37	38	39	40	41	42	43	44	45	46	48	50	52
TAILLE JALIE - JALIE SIZES	R	S	T	U	V	W	X	Y	Z	AA	BB	CC	DD	EE	FF
1 TOUR DE POITRINE FULL BUST	33" 84	34" 86	35" 89	36" 91	37" 94	38" 97	39" 99	40" 102	41" 104	42" 107	43" 109	44" 112	46" 117	48" 122	50" 127
2 TOUR DE TAILLE NATURAL WAIST	27" 69	28" 71	29" 74	30" 76	31" 79	32" 81	33" 84	34" 86	35" 89	36" 91	37" 94	38" 97	40" 102	42" 107	44" 112
3 TOUR DES HANCHES HIPS (FULLEST)	36" 91	37" 94	38" 97	39" 99	40" 102	41" 104	42" 107	43" 109	44" 112	45" 114	46" 117	47" 119	49" 124	51" 130	53" 135
4 TRONC (DEVANT+DOS) TORSO (FRONT+BACK)	57" 145	59" 150	60" 152	61" 155	61 3/4" 157	63" 160	63 1/2" 161	64 1/2" 164	65 1/4" 166	66" 168	66 1/2" 168	66 1/2" 169	67" 170	67 1/2" 171	68 " 173

TISSU REQUIS - YARDAGE

42"	UNI (UN SEUL TISSU) SOLID (ONE FABRIC)	3 yd	3 yd	3 1/2 yd	3 3/4 yd	3 3/4 yd	4 yd	4 yd	4 yd	4 yd	4 yd	4 yd	4 1/4 yd	4 1/4 yd	4 1/4 yd	4 1/4 yd
106 cm		2.65 m	2.75 m	3.20 m	3.20 m	3.30 m	3.50 m	3.50 m	3.55 m	3.55 m	3.60 m	3.65 m	3.70 m	3.75 m	3.80 m	3.85 m
56"	UNI (UN SEUL TISSU) SOLID (ONE FABRIC)	2 1/2 yd	3 yd	3 yd	3 yd	3 yd	3 yd	3 yd	3 yd	3 yd	3 yd	3 yd	3 yd	3 yd	3 yd	3 yd
142 cm		2.20 m	2.65 m	2.65 m	2.65 m	2.65 m	2.65 m	2.65 m	2.75 m	2.75 m	2.75 m	2.75 m	2.75 m	2.75 m	2.75 m	2.75 m

PIÈCES - PATTERN PIECES



PRÊT À COUDRE // READY TO SEW
ressources de couture (1 cm / 3/8") incluses dans le patron
1 cm / 3/8" seam allowances included in the pattern



1703889

Jalie
PATRONS DE COUTURE
SEWING PATTERNS

© 2018 LES PATRONS JALIE INC.

www.jalie.com

IMPRIMÉ AU CANADA / PRINTED IN CANADA